

# OLYMPUS

Your Vision, Our Future

## EVIS EXERA III

### BF-P190

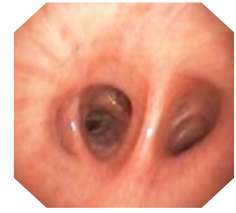
**Slim 4.2 mm Bronchoscope for Better Access to the Lung Periphery.**



## Main Features

### Slim-design Videoscope

Newly developed CCD on the tip realizes drastically improved image quality while maintaining a slim diameter and a 2.0 mm instrument channel.



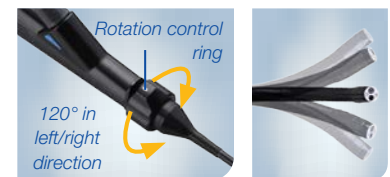
BF-P190

### NBI (Narrow Band Imaging)

The incorporated NBI mode, an optical image enhancement technology, improves the visualization of vessels on the mucosal surface.

### Insertion Tube Rotation Function

The insertion tube can be rotated left or right up to 120° by simply turning a ring on the control section of the scope. This supports easier operation and smoother insertion with less operator fatigue.



### Wider Angulation Range

An upward angulation range of 210° supports smoother insertion into the upper-lobe bronchi and allows more of a bend in the scope when an EndoTherapy device is inserted into the endoscope's working channel.



### Waterproof One-touch Connector

A new connector design minimizes the effort required for setup prior to and in between cases. In addition, it is fully submersible without a water-resistant cap and eliminates the associated risk of an expensive repair due to accidental immersion.

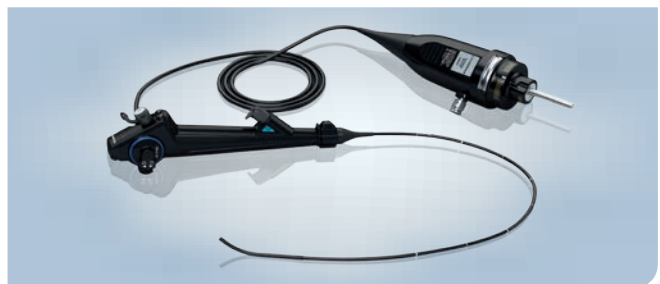


### Ergonomic Scope Cable Direction

The angle of direction of the universal cord has been improved so that the scope cable does not hang limp, even if the video system is located behind the bronchoscopist.

## Specifications

<b>Optical system</b>	Field of view	110°
	Direction of view	Forward viewing
	Depth of field	2–50 mm
<b>Insertion tube</b>	Distal end outer diameter	4.2 mm
	Distal end enlarged	
<b>Insertion tube</b>	Insertion tube outer diameter	4.1 mm
	Working length	600 mm
	Insertion tube rotation function	Yes
	<b>Instrument channel</b>	Channel inner diameter
	Minimum visible distance	3.0 mm from the distal end
	Direction from which EndoTherapy accessories enter and exit the endoscopic image	



<b>Bending section</b>	Angulation range	Up: 210° Down: 130°
<b>Electrocautery instrument compatibility</b>	Yes	
<b>Compatible EVIS EXERA system</b>	Video system center OLYMPUS CV-190 Xenon light source OLYMPUS CLV-190	

Specifications, design, and accessories are subject to change without any notice or obligation on the part of the manufacturer.